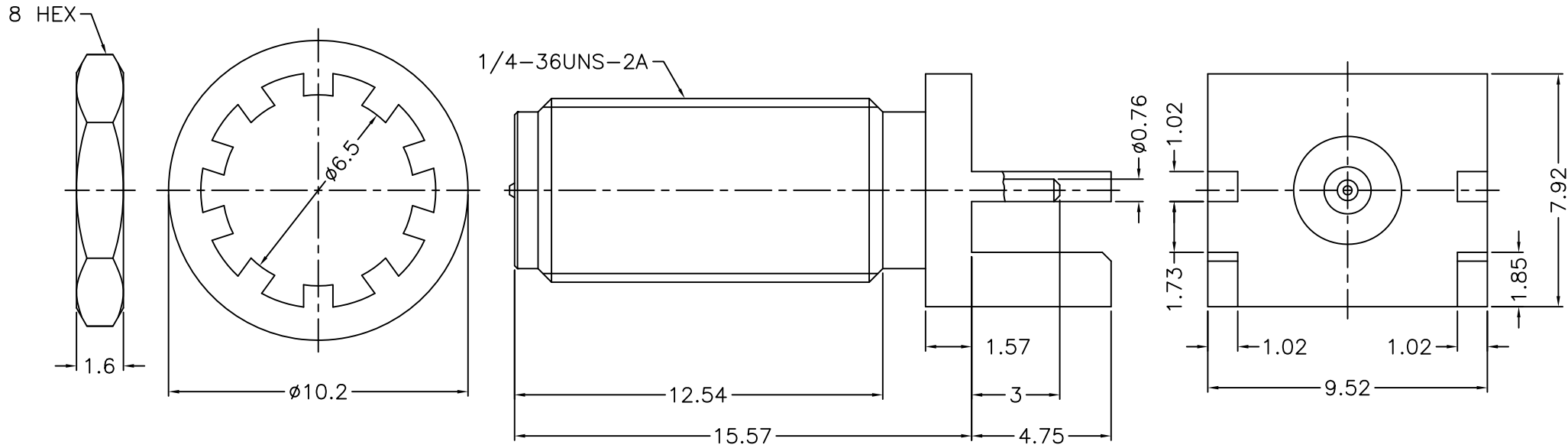


REVISIONS		
ISS	ZONE	DESCRIPTION\PER REQUEST\DATE
A1	A-5	ADDED PART NO.\N/A\08-20-'15



NOTES: FINISH (PLATING THICKNESS IN MICRO-INCHES)

- BRASS
- THIN GOLD OVER NICKEL PL. 50 MIN. THICK OVER COPPER PL. 50 MIN. THICK
- GOLD PL. 3 MIN. THICK OVER NICKEL PL. 50 MIN. THICK OVER COPPER PL. 50 MIN. THICK
- TEFLON

RoHS COMPLIANT

5	HEX NUT	NOTE 1	NOTE 2	1	HN-8-1436-16	DIMENSIONS ARE IN MILLIMETERS UNLESS OTHERWISE SPECIFIED TOLERANCES 0.5-6 = ±0.2 6-30 = ±0.4 30-120 = ±0.6 120-315 = ±1 315-1000 = ±1.6 1000-2000 = ±2.4	PART NO.		G.L.I.		
4	LOCK WASHER	NOTE 1	NOTE 2	1	LW-65-102-05		M34-10687-010				
3	CONTACT PIN	NOTE 1	NOTE 3	1	1436RP-6251S5-3		APPROVED	DATE		TITLE	
2	INSULATOR	NOTE 4	NATURAL	1	1436RP-6251S5-2-50T		CHECKED	DATE		SMA REVERSE POLARITY END LAUNCH PCB JACK	
1	BODY	NOTE 1	NOTE 2	1	1436RP-6251S5-1		DRAWN	DATE		DRAWING NO. 1436RP-6251S5-50	
NO.	DESCRIPTION	MATERIAL	FINISH	Q'TY	DRAWING NO.	SCALE	5/1	ISSUE	A1	DATE	FILE NO. R:\D\G\DWG\1436\RP\6251S5\50